

MAY  
2022



ASCLS-WA is approved as a provider of continuing education programs in the clinical laboratory sciences by the ASCLS P.A.C.E.® Program



## CE STUDENT SEMINAR

**Systemic Lupus Erythematosus and Targeted Treatments By: Alexander Ramirez, BS MAY 10TH @ 2:00 PM**

**Cystic Fibrosis and the use of Lumacaftor and Ivacaftor for ages 2-5 By: Bernie Trujillo, BS MAY 10TH @ 3:00 PM**

**Role of the Clinical Lab in containing STI By: Ian Kinney, BS MAY 5TH @ 2:00 PM**

**Bombay blood type diagnosis and transfusion practices By: Hannah Riel, BS MAY 4TH @ 3:00 PM**

**Elucidating the Diagnosis of Prostate Cancer By: Christopher Miranda, BS MAY 4TH @ 2:00 PM**



**Zoom Meeting ID: 930 3082 2034  
Password: 515032**

# 2022 HERITAGE UNIVERSITY SEMINAR VIRTUAL MEETING EDUCATIONAL SESSIONS

May 4, 2022 | 2:00 - 3:00 PM

Level: Basic

1 Contact Hour

## Elucidating the Diagnosis of Prostate Cancer

### - Christopher Miranda, BS

This lesson will start with a brief overview of prostate cancer. The presenter will then discuss new laboratory test methods to aid in the early detection of prostate cancer as well as recognition of risk factors that may aid in preventing disease.

- > Accurately identify the laboratory tests that lead to a diagnosis of prostate cancer.
- > Describe the roles of each healthcare professional in the detection and diagnosis of prostate cancer.
- > List populations that are more susceptible to prostate cancer and the predisposing risk factors.

May 4, 2022 | 3:00 - 4:00 PM

Level: Intermediate

1 Contact Hour

## Bombay Blood Type: Diagnosis and Transfusion Practices

### - Hannah Riel, BS

This lesson will discuss the rare inherited Bombay blood type and the complications that may arise in the blood bank when trying to identify it.

- > Explain why Bombay blood types as Type O blood.
- > Describe the testing needed to identify Bombay type in the laboratory.
- > Describe the processes needed to correctly handle the transfusion of a patient with Bombay blood type.

May 5, 2022 | 2:00 - 3:00 PM

Level: Basic

1 Contact Hour

## Role of the Lab in Containing Sexually Transmitted Diseases

### - Ian Kinney, BS

This lesson covers the epidemiology of sexually transmitted infections with a concentration on Chlamydia infections in the Yakima Valley. Test practices and role of the clinical laboratory in preventing infections will be discussed.

- > Discuss various factors that contribute to STI epidemiology in populations.
- > Evaluate the pros and cons of molecular diagnostic techniques over traditional methods in STI detection.
- > List the role that the clinical laboratory plays in the healthcare infrastructure of under served populations in testing for STIs.

# 2022 HERITAGE UNIVERSITY SEMINAR

## VIRTUAL MEETING

### EDUCATIONAL SESSIONS

May 10, 2022 | 2:00 - 3:00 PM

Level: Basic

1 Contact Hour

## Systemic Lupus Erythematosus and Targeted Treatments

### - Alexander Ramirez, BS

Systemic Lupus Erythematosus (SLE) is an autoimmune disease that affects women more than men and has a higher prevalence in African American and Hispanic communities than in people of Western European descent. This lesson will discuss the pathology of the disease, tests used in diagnosis and treatment of SLE.

- > Distinguish between Systemic Lupus and other forms of lupus in regards to pathogenesis.
- > Describe the process of diagnosis and the criteria required for a diagnosis.
- > Discuss the reasoning and importance behind targeted treatments for Systemic Lupus.

May 10, 2022 | 3:00 - 4:00 PM

Level: Basic

1 Contact Hour

## Cystic Fibrosis and the Use of Lumacaftor and Ivacaftor for Ages 2 - 5

### - Bernardo Trujillo, BS

This lesson on Cystic Fibrosis begins with a short discussion on the epidemiology of the disease. This is followed by information related to old and new methods of detection. Finally, information on new treatments that are available for Cystic Fibrosis patients are discussed.

- > Using inheritance patterns, calculate the likelihood of a person inheriting the gene for Cystic Fibrosis.
- > Describe the mutation in the CTFR gene that causes cystic fibrosis.
- > Describe the mechanisms of action of the drugs Lumacaftor and Ivacaftor on the proteins involved in cystic fibrosis.



MAY  
2022



ASCLS  
The American Society for  
Clinical Laboratory Science  
WASHINGTON

Heritage University

ASCLS-WA is approved® as a provider of continuing education programs in the clinical laboratory sciences by the ASCLS P.A.C.E.® Program

# CE STUDENT SEMINAR

Zoom Meeting ID: 930 3082 2034

Password: 515032

## Presentation Agenda

### **Diabetes and its Relation to Inflammation and Obesity**

Presented by Kyrin Jacot, BS

May 3..... 2:00 PM

### **Childhood IgAV**

Presented by Esmeralda Mora, BS

May 3 ..... 3:00 PM

### **Adrenal Gland Disorders**

Presented by Robert Huffaker, BS

May 5 ..... 3:00 PM

### **Liquid Biopsy: The Future of Cancer Diagnostics**

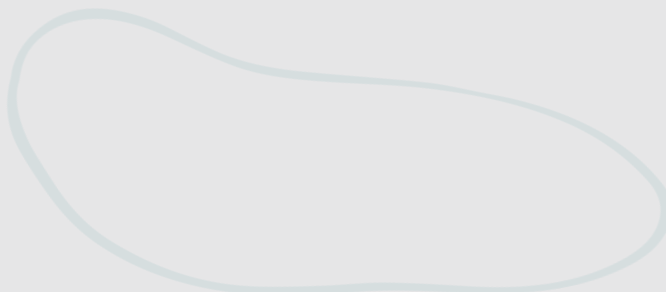
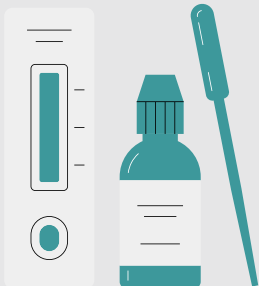
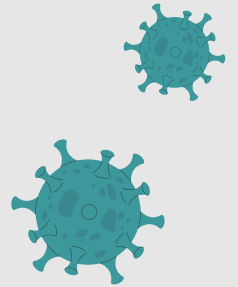
Presented by Minda Lee, BS

May 11 ..... 2:00 PM

### **Detection and Management of Preeclampsia**

Presented by Hannah Chua, BS

May 11 ..... 3:00 PM



# 2022 HERITAGE UNIVERSITY SEMINAR

## VIRTUAL MEETING

### EDUCATIONAL SESSIONS

May 3, 2022 | 2:00 - 3:00 PM

Level: Basic

1 Contact Hour

## Diabetes: Relation to Inflammation and Obesity

### - Kyrin Jacot, BS

This lesson discusses Type II Diabetes and its link to inflammation and obesity as well as disease states that are brought on by inflammation. A discussion about testing to designed to aid in detection of these diseases.

- > Evaluate the impacts of the diabetes crisis on socioeconomic issues.
- > Recognize the value of studying new methods for pre-diabetes testing.
- > Explain how inflammation of adipose tissue and immune cells contribute to the progression of diabetes.

May 3, 2022 | 3:00 - 4:00 PM

Level: Basic

1 Contact Hour

## Childhood IgA Vasculitis

### - Esmeralda Mora Moreno, BS

IgA Vasculitis is a rare disease that occurs most often in girls prior to puberty. It can be life threatening and can affect vasularture in the skin, kidneys, joints and intestines. This lesson will cover the epidemiology of this disease and the lab tests that are used to diagnose it

- > List the affected age group and symptoms that can help in early identification of IgAV.
- > Identify laboratory tests that can aid in diagnosis.
- > Explain the role an MLS plays in IgAV diagnosis.

May 5, 2022 | 2:00 - 3:00 PM

Level: Basic

1 Contact Hour

## Adrenal Gland Disorders

### - Robert Huffaker, BS

This presentation will focus on several major adrenal gland disorders and the tests used to diagnose those disorders.

- > List the major parts of the adrenal gland and the main products of each.
- > Define Cushing's Syndrome and list the major test methods for detection of this condition.
- > Define Primary Hyperaldosteronism and list the major test methods for detection.



# 2022 HERITAGE UNIVERSITY SEMINAR

## VIRTUAL MEETING

### EDUCATIONAL SESSIONS

May 11, 2022 | 2:00 - 3:00 PM

Level: Basic

1 Contact Hour

## Liquid Biopsy: The Future of Cancer Treatment and Prevention

- Minda Lee, BS

New technology involving molecular testing may not be commonly encountered in a hospital, but it is a growing industry that is being increasingly used for patient testing. Liquid biopsy is an example of technology that is no longer used in just research, as many assays have been approved by the FDA for use in healthcare. There is a growing need for licensed MLSs to perform patient testing using this new technology.

- > Describe one method used for detection of CTCs in blood and one method used for detection of cfDNA.
- > Describe a current clinical application of liquid biopsy.
- > Create a list comparing the pros and cons of liquid biopsy vs the traditional tissue biopsy.

May 11, 2022 | 3:00 - 4:00 PM

Level: Basic

1 Contact Hour

## Detection and Management of Preeclampsia

- Hannah Chua, BS

Discussion of preeclampsia and its related complications. Discussion will also focus on the tests involved in diagnosis and treatment.

- > Define preeclampsia and list the risk factors associated, including complications.
- > List the tests necessary for detection of preeclampsia
- > Identify the theory behind the tests for preeclampsia.

